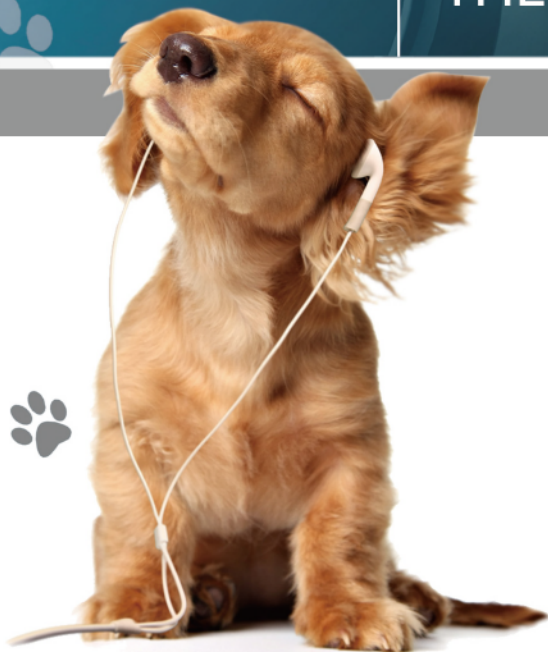




GET IN TOUCH WITH
THE FUTURE OF ULTRASOUND

www.sonotouch.com

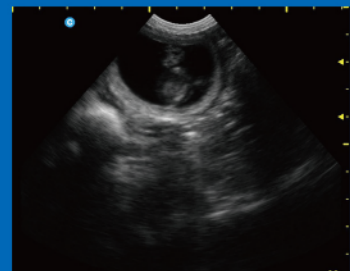
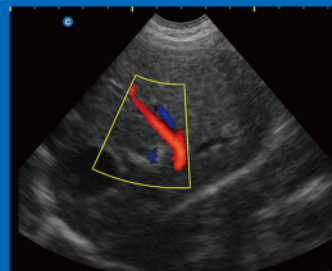
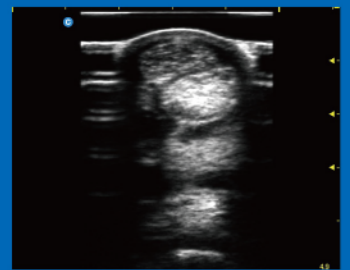
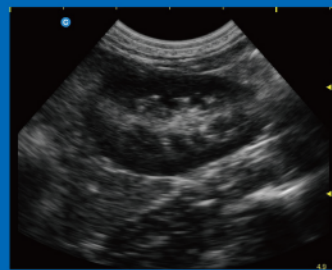
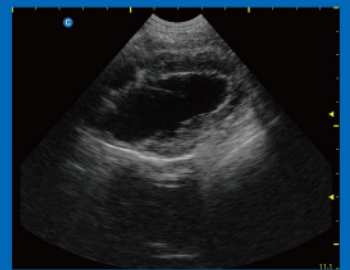
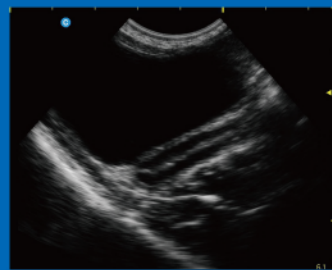


FDA CE 0197



SonoTouchTM
The Revolution is at Hand

Simple,
Intuitive



SonoTouch™



The Future of Veterinary Ultrasound

GoLED™

- Sharp & bright, **visible outdoor**
- The entire button-free screen is touch-driven
- Front panel is **water-proof**

GoMeasure™

- **VET software**
- Take measurements with your fingers – no trackball, no stylus
- Measurement accuracy to under 1mm

GoHub™

- Quick copy, paste and transfer of images & reports
- Easy import and export of patient information or case studies
- **USB, DICOM 3.0**, (optional)

GoPower™

- Boots up in just 30 seconds
- **Battery life of up to 2.5 hours**
- Available **car charger** (optional)
- Shuts down in 2 seconds



GoTune™

- Refine the image with easy, touch-driven TGC, focus and depth

GoApp™

- Over **25 VET presets**, wide VET applications
- Select species & presets by **visual icon**
- quick, intuitive

GoFlex™

- Portable stand goes anywhere
- Adjustable angle
- Converts into an integrated **handle for carrying**

GoClip™

- Quick save and recall
- Plays CINE clips forward or backward

With SonoTouch's Advanced Features You're Good to Go

Vet Probe



MC6: 4-8MHz Micro-Convex
Application: Small animal ABD, OB, GYN, Cardiac

MC5V: 4.5-7MHz Micro-Convex
Application: Small animal ABD, OB, GYN,



L7M: 5-10MHz Linear
Application: Small animal ABD, Intestine, MSK, Equine tendon

C3: 2.5-5MHz Convex
Application: Large canine and large animal ABD, OB, GYN, Urology



L7V: 5.0-9.0MHz Linear rectal
Applications: Large animal reproduction

P3: 2.5-4MHz Phased array
Applications: Large animal cardiac, ABD



L7S: 5-11 MHz Linear
Applications: Small animal ABD, Small parts, MSK



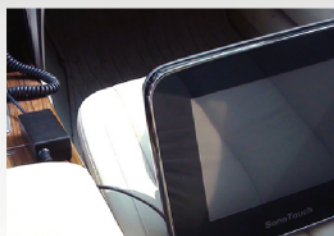
Versatile



Arm-held



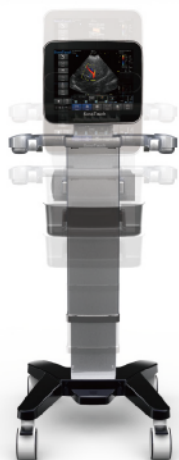
Carrying Case



Battery lasts for 2.5 hours, and re-chargable from car.



Hand-carry



CHISON Medical Technologies Co., Ltd.

Sales & Service Contact Address:

No.9, Xinhuihuan Road, Xinwu District, Wuxi, Jiangsu, China 214028

TEL : 0086-510-85310593 / 85310937

FAX : 0086-510-85310726

EMAIL : export@chison.com.cn

Patents pending

We reserve the right to make changes to this catalogue without Prior notice

ESTVET121031